



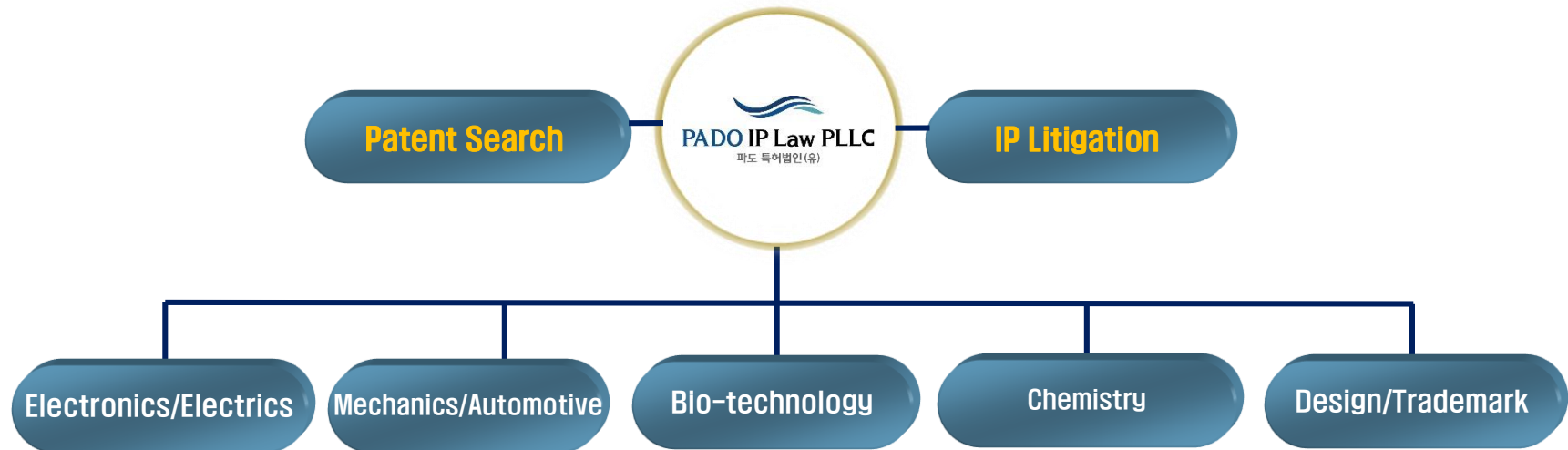
# PADO IP Law PLLC

파도 특허법인(유)

*PADO means a new wave or new generation in Korean*



# ❖ Firm Overview



**-PADO IP Law PLLC is providing a variety of overseas as well as domestic clients with high quality IP services through close cooperation between a number of patent attorneys with specialized expertise and years of experience in various industries and specialized staffs.**

**-PADO IP Law PLLC handles all of the various types of IP applications, registrations and related processes before the Korean Intellectual Property Office (KIPO), and is regularly called on, at both trial and appellate levels, for litigation over KIPO findings, and for litigation and administrative review of IP infringement claims.**

**-PADO IP Law PLLC provides Patent Search & Analysis service for worldwide (including KR, CN & JP).**



# ❖ Our Practice

## ■ Practice Areas

- Patents
- Trademarks
- Designs
- Copyrights
- Domain names
- Unfair Competition
- Trade Secret Protection
- Internet & E-commerce
- IP Litigation
- Customs Enforcement
- Licensing
- IP Evaluation
- IP Transaction

## ■ Technical Fields

- Mechanics
- Mechatronics
- Materials Science
- Automotive engineering
- Electronics
- Semiconductor
- Telecommunications
- Computer & Software (AI)
- Internet, E-commerce & BM
- Chemistry
- Biotechnology
- Pharmaceuticals
- Medical Device





# ❖ Main Members



Jay LEE  
Representative Partner



Jeong Hoon LEE  
Representative Partner



Hyun jeong JIN  
Patent Attorney/Partner



Sukju YANG  
Representative Partner



Sook young PARK  
Patent Engineer/ph.D.



Woong-Joe SHIN  
Representative Partner



Jeong-Hoon Kim  
Patent Attorney/Partner



Hannah KIM  
Patent Attorney/Partner



Sungwon LEE  
Partner Attorney/Partner



Eun Kyung Chung  
Patent Attorney/Partner



Seong Eun Koo  
Patent Attorney/Partner



Ga Bin SONG  
Patent Attorney/Partner



Charles G.C. CHOE  
Patent Attorney/Associate



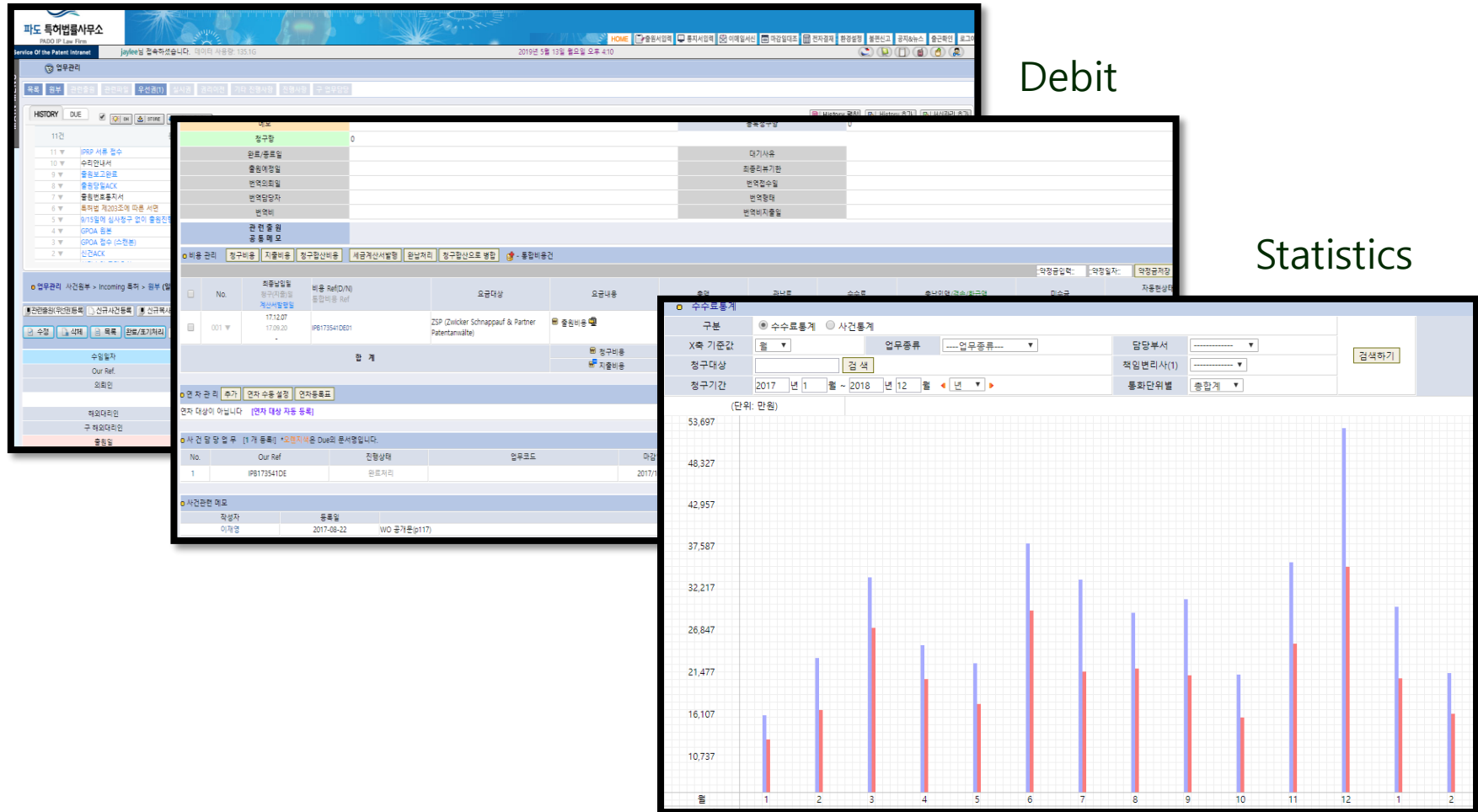
Rachel Gook  
Patent Attorney/Associate



Eddy Kim  
Patent Attorney/Associate

Debit

## Statistics



# ❖ Systems(1) – Mailing

## SMART Auto Mailing System

☆ [PADO ALARM] 국내OA 법정기한 4주전/연세대학교 산학협력단/김현석 {(DPB162469k01d01)}

보낸사람 VIP 국내대표 <pado@padoip.com> 메시지 | 약속추대

받는사람 <jinaha@padoip.com>

참조 국내대표 <pado@padoip.com>, <jayfee@padoip.com>, <jayfee@padoip.com>

\*법정기한 4주전 통보입니다. 검토서는 발송하셨는지요?  
\*\*소피상 검토서를 초안발송하셨더라도 자동 발송되오니, 이점 양해를 부탁드립니다.

현담당 : 하지나  
Our Ref : DPB162469k01  
출원일 : 2018-09-17  
출원인 : 연세대학교 산학협력단  
발명자 : 김현석  
명칭 : 내성암, 재발암

문서명 : 의견제출물지서  
접수일 : 2018-10-10  
**마감일 : 2018-12-10**  
**연장일 :**

☆ [파도특허 Reminder-PC T 국내단계진입 1.5개월 기한 안내] (주)프로스테릭스 {(OPB173231PCT)}

보낸사람 VIP 해외대표 <m.al@padoip.com> 메시지 | 약속추대

받는사람 <eucho@prostemics.com>

참조 해외대표 <m.al@padoip.com>, <jayfee@padoip.com>, <jayfee@padoip.com>, <sympark@padoip.com>

수신 : (주)프로스테릭스  
발신 : 파도 특허법률사무소 책임변리사 이재명  
제목 : PCT 국제출원 국내단계진입기한 1.5개월진 안내의 건

**\*\*작업한 준비를 위하여, "2018-12-08"까지 이메일 회신을 주시길요. 더이상 진행하지 않는 것으로 간주되오니, 이점 양해를 부탁드립니다.**

1. 출원하신 하기 PCT 국제출원에 대하여, 해외 개별국가 출원을 위한 30개월 마감 기한을 안내 드리오니 국내단계에 진입하고자 하는 국가를 결정하시어 이메일 또는 유선으로 연락주시기 바랍니다.

출원인	PCT 출원번호	PCT 출원일	국내우선권번호
(주)프로스테릭스	PCT/KR2017/006961	2017-06-30	10-2016-0082633
국내출원일	발명의 명칭	발명자	30개월국내단계진입 마감일
2016-06-30	클라트와 발생 장치 및 이를 이용한 항암 치료 방법	윤성원 · 이원종 · 최은숙 · 김정현	<b>2018-12-30</b>

2. 국내단계 진입을 통해서 해당 국가에서 심사료 특점적인 권리를 확보할 수 있습니다. 하지만, 국내단계 진입을 하지 않는 경우에는 그 나라에서 권리가 발생되지 않고, 추후 기한 경과후에는 출원이 원칙적으로 불가능합니다. 따라서, 현재 경쟁 시장(Market)외에 추후 형성될 잠재 시장(Potential Market)이 될 수 있는 국가를 선정하는 것이 바람직합니다.

3. 통상, 미국/유럽/중국/일본 주요 4개국을 우선적으로 고려하고, 2차적으로 동중국(이란, 이스라엘, 이라크 등), 동남아(인도, 베트남, 말레이시아, 싱가포르 등), 러시아 및 남아프리카, 칠레, 멕시코 등을 고려합니다. 일반적으로 출원비용은 대략 500만원 내외가 소요되고, 유럽은 800만원 내외가 소요됩니다. 또한, 심사기간은 대략 3년에서 5년이 소요되며, 심사대응 단계 및 통목단계에서 추가 비용이 발생됩니다.

4. PCT 국제출원과 달리 개별국 출원의 경우, 언어변역문을 작성하고 해당국가의 언어로 번역하기 위한 시간이 필요하므로, 원활한 해외출원절차가 이루어질 수 있도록 **마감기한 2달전**에 연락을 주시기 바랍니다.

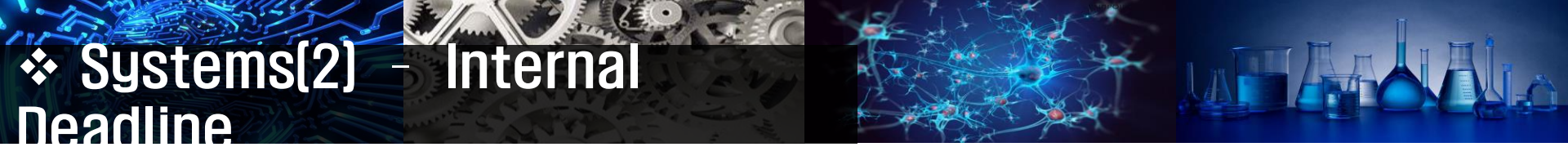
5. 본 견과 관련하여 기타 문의사항이 있으시면 언제든지 연락을 주시기 바랍니다. 감사합니다.

\*본 메일은 시스템에서 발송된 것으로, 사전에 해외출원이 된 경우에도 시스템상 처리로 인해 발송될 수 있으니 이점 양해를 부탁드립니다.

Smart Reminder

Smart Deadline

Smart Filing



# ❖ Systems(2) Internal Deadline

## (1) Calendar

사건담당업무 할당개요

2016년 10월

월요일	화요일	수요일	목요일	금요일	토요일
09/25	09/26	09/27	09/28	09/29	09/30
2 DPC14000PCT[MX] [OUT] OA 대응	3 DPC163340[국내] 명세서 DPC163521[국내] 명세서 DPC140000[국내] 가결명명 대응 DPC140000[국내] 가결명명 대응	4 DPC140005CN[동북/공과명명] DPC140052[국내] OA 대응 DPC140000[국내] 가결명명 대응 DPC163342[국내] 명세서 DPC163343[국내] 명세서 DPC163344[국내] 명세서 DPC163345[국내] 명세서 DPC163402EP[OUT] 명세서 DPC164178[국내] OA 대응 DPC1630013CN[IN] 가결명명 대응 DPC1630018[국내] 선별가결명명 대응 DPC163726[국내] 선별가결명명 대응	5 DPC163136CN[IN] 명세서 DPC163689[국내] 선별가결명명 대응	6 DPC163689[국내] 선별가결명명 대응	7 DPC154215PCT/CN [OUT] OA 대응 DPC154215PCT/JP [OUT] OA 대응 DPC154215PCT/JP [OUT] OA 대응 DPC1633316US[IN] 명세서
8 DPC140077CN[OUT] OA 대응 DPC163106PCT[PCT] 명세서 DPC163106US[OUT] 명세서	9 DPC163683[국내] 선별가결명명 대응	10 DPC1633316US[IN] 명세서	11 DPC150016US[IN] OA 대응		

## (2) Statistics

출원기관도과 현황

관리별: ☒ 전제관리 ☐ 선택관리 ( ☐ 국내 ☐ 인허가 ☐ 해외 ☐ 기타 )

조건별: ---건제부서--- ☐ ---책임관리사(1)--- ☐ 미제명 ☐ 미달자

기간 검색: 업무배분일 2017-01-01 ~ 2017-12-31

실무내용	보유건	실질포인트	미발송	발송	누적통계	미도과율
			조안준비중	조안 발송후 제출대기		
출원(명세서)	2	0	기한 미도과	기한 도과	기한 미도과	기한 도과
			2	0	0	0
출원(선명)	0	0	선명가결명명조사서 준비 중		누적 제출	
			기한 미도과	기한 도과	기한 미도과	기한 도과
			0	0	0	0
OA	3	0	검토서 준비중	검토서 발송후 제출대기	누적 제출	
			기한 미도과	기한 도과	기한 미도과	기한 도과
			0	0	2	1
조사	0	0			15	10
소송	0	0				
합계	5	0				

## (3) Classification of Work

행 레이블: ☐ 개수 : Our Ref. 합계 : 보유포인트 개수 : 초안발송일 개수 : 제출마감일

배속명	25	17.1	8	24
[OUT] IDS	1	0		
[OUT] 명세서보정	1	0		1
[PCT] 추가/청구항/도면	5	5		5
[국내] OA대응	2	1	2	2
[국내] 명세서	8	8.5	4	8
[국내] 분할review	1	0.1		1
[국내] 선행조사	1	0	1	1
[국내]PRE-내용부족	3	0	1	3
[조사] 유PM	1	2.5		1
[조사]PRE 생성	2	0		2
심혜민	11	9.25	2	11
[IN] OA 대응	1	0.5		1
[국내] 명세서	5	6.5	2	5
[국내] 선행조사	1	0.25		1
[국내]PRE-국우	3	0		3
[조사] 무PM	1	2		1





# ❖ Services We Offer

- 1. **Patent Prosecution** – hands-on involvement per the client’s request, such as casual teleconference with our clients to discuss the claim amendments and office action responses.
- 2. **Patent Litigation** – proactive approach to every trial stage to obtain the most favorable results for the clients, such as aggressive efforts to obtain key evidence, advanced know-hows in making a case presentation in favor of our clients before the judge(s) during the trial hearings.
- 3. **Due diligence** – effective collaboration of the patent attorneys and the search specialists
- 4. **FTO & Clearance Check** – see the following
- 5. **IP Activity Monitoring** – see the following



# Patentability Assessment Service

## Inputs

- ✓ Invention Summary
- ✓ Seed information/ known prior art

## Execution

- Understanding the invention summary and preparing the key feature list
- Preparing the list of key words and technical synonyms
- Prior art searching on patent and non-patent databases
- Search report preparation
- QC of the search report and internal discussion on the identified prior arts
- submission of the final search report for your review and comments

# Provisional / Non-Provisional Drafting

## Inputs

- ✓ Invention Summary
- ✓ Seed information/ known prior arts

## Execution

- Understanding and identification of the independent claim grounds
- Approval on independent claims and finalizing the drawings
- Writing complete specification
- Proofreading and other quality checks
- Professional patent drawings
- Quality checks on professional patent drawings

# Patent Filing Service

## Inputs

- ✓ Receiving information/ instructions from client

## Execution

- Understand the client requirements
- Guide and advise the client as **Korean** Patent Act
- Preparing application with all the supporting documents
- Electronic filing of application
- Preparing reporting letter to client with all the required information
- Regular Tracking of the application
- Regular updates to the client

# OA Response Drafting

## Inputs

- ✓ Copy of all the communication with the patent office
- ✓ Communication on your expectations and views on received office action

## Execution

- Creating understanding on the case history
- Understanding the cited prior art, objection by the examiner
- Technical discussion with the client to understand the expectations and his/ her views on objections
- Designing strategy on the response and sharing it with client for approval or improvisation
- Executing the designed and approved strategy
- Final QC and submission of the OA response



# Validity/Invalidity Opinion

## Inputs

- ✓ Subject Patent
- ✓ Claims of interest
- ✓ Critical Dates for identification of prior arts.
- ✓ Assignees of interest
- ✓ Databases of interest

## Execution

- Identification of relevant patents (granted, published, abandoned or expired) & non-patent literature.
- Claim charting and expert comments.
- Preparation of validity opinion.
- Highlighting of relevant portions of identified prior arts
- Quality Check
- Preparation of a user friendly report.

# File History Summarization

## Inputs

- ✓ Subject Patent
- ✓ Prosecution History PDF

## Execution

- Identification of critical dates
- Identification of initially filed claim set
- Identification and tracking of changes between initially filed claim set and finally granted claim set.
- Preparation of summary of changes made in the claim set.
- Quality Check
- Preparation of a user friendly report.

# Claim Charting

## Inputs

- ✓ Subject Patent
- ✓ Claims of Interest
- ✓ Prior Art Document

## Execution

- Claim construction (enablement of claims of the subject patent)
- Identification of grounds of acceptance of claims of the subject patent from the prosecution history.
- Identification and mapping of most relevant sections from the prior art against claimed elements of the subject patent.
- Expert comments on the mapping and relevant texts.
- Highlighting the PDF copy of prior art document
- Quality Check
- Preparation of user friendly report.

# Infringement Analysis

## Inputs

- ✓ Subject Patent
- ✓ Target Companies (if any)

## Execution

- Claim construction (enablement of claims of the subject patent)
- Identification of grounds of acceptance of claims of the subject patent from the prosecution history.
- Preparation of a list of potential infringers.
- Expert comments on the list of potential infringers
- Quality Check
- Preparation of a user friendly report.



# Evidence of Use

## Inputs

- ✓ Subject Patent
- ✓ Target Companies / products

## Execution

- Claim construction (enablement of claims of the subject patent)
- Identification of grounds of acceptance of claims of the subject patent from the prosecution history.
- Thorough analysis of target products or target company's products.
- Collection and mapping of evidences from the target products or target company's products.
- Expert comments on the mapping of target products or target company's products.
- Quality Check
- Preparation of a user friendly report.

# State of the Art Search

## Inputs

- ✓ Technology overview
- ✓ Seed information/known prior arts

## Execution

- Identification of relevant patents (granted, published, abandoned or expired) & non-patent literature.
- Expert comments.
- Preparation of state of the art expert opinion.
- Quality Check
- Preparation of a user friendly report.

# Freedom to Operate / Clearance Check

## Inputs

- ✓ Product details
- ✓ Seed information/known patents
- ✓ Jurisdictions of Interest

## Execution

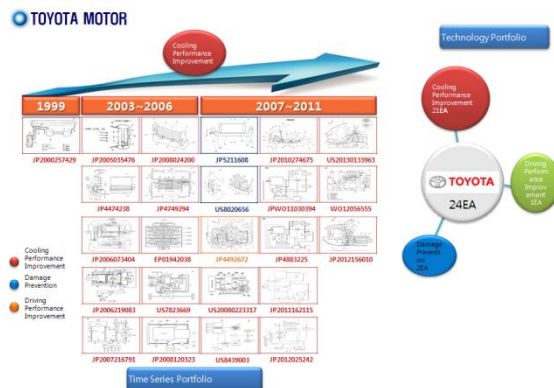
- Identification of relevant patents (granted, published, abandoned or expired)
- Mapping of claims of identified patents against features of the product.
- Expert comments on mapping.
- Highlighting of relevant portions of the identified patents' PDFs.
- Preparation of Freedom to operate opinion.
- Quality Check
- Preparation of a user friendly report.

# Patent Landscape

## Inputs

- ✓ Technology Details
- ✓ Seed information/known patents
- ✓ Jurisdictions of Interest
- ✓ Timeline
- ✓ Key Assignees

### 2. [Low Temperature Radiator] Technology Flow Analysis



## Execution

- Preparation of taxonomy
- Identification of relevant patents (granted, published, abandoned or expired)
- Categorization of identified patents in taxonomy nodes.
- Quality Check
- Trend Analysis
- Technology growth analysis
- Key players' analysis
- Identification of critical patents
- Preparation of an executive summary with expert comments
- Preparation of user friendly report.



# Portfolio Analysis

## Inputs

- ✓ Company of interest
- ✓ Technology of interest
- ✓ Jurisdictions of Interest
- ✓ Timeline

## Execution

- Preparation of taxonomy
- Identification of patents (granted, published, abandoned or expired)
- Categorization of identified patents in taxonomy nodes.
- Quality Check
- Trend Analysis
- Technology growth analysis
- Identification of critical patents
- Preparation of an executive summary with expert comments
- Preparation of user friendly report.

# Whitespace Analysis

## Inputs

- ✓ Technology Details
- ✓ Seed information/known patents
- ✓ Jurisdictions of Interest
- ✓ Timeline
- ✓ Key Assignees

## Execution

- Preparation of taxonomy
- Identification of relevant patents (granted, published, abandoned or expired)
- Categorization of identified patents in taxonomy nodes.
- Quality Check
- Trend Analysis
- Technology growth analysis
- Key players' analysis
- Identification of whitespace
- Preparation of an executive summary with expert comments
- Preparation of user friendly report.

# Patent Activity Monitoring

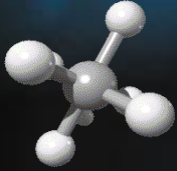
## Inputs

- ✓ Technology Details
- ✓ Seed information/known patents
- ✓ Jurisdictions of Interest
- ✓ Timeline
- ✓ Target Assignees

[illegible]

## Execution

- Preparation of taxonomy
- Categorization of critical patents in taxonomy nodes
- Quality Check
- Trend Analysis, if required
- Preparation of an executive summary with expert comments
- Preparation of user friendly report with new patents/ applications identified during the watch



# THANK YOU

**PADO IP Law PLLC**

Any questions on IP matters in Korea may be directed to:

Email: [mail@padoip.com](mailto:mail@padoip.com)

Tel: +82 2 6677 1212

<http://www.padoip.com>

